

## Instructions for Installing ArcGIS 10

These detailed instructions will help you choose the right options when installing the student evaluation version of ArcGIS 10. You will need to be connected to the Internet.

### Before you start these instructions:

- Uninstall previous versions of ArcGIS and Python if you have any.
- IMPORTANT! Activate your Authorization Number on the ESRI web site.
- Make sure that you have an installation DVD, or have extracted the ISO installation file (available from the F:\ drive or ESRI) to your hard drive.

### Step 1. Installing the software

**If using the DVD installation method:** Put the DVD in the computer's drive. If a splash screen does not appear, double-click the **Setup.exe** file in the **ArcGISDesktop** folder on the DVD.

**If using the ISO file method:** Open the folder where you extracted the ISO installation file. Find the **ArcGISDesktop** folder and double-click the **Setup.exe** file to start it.



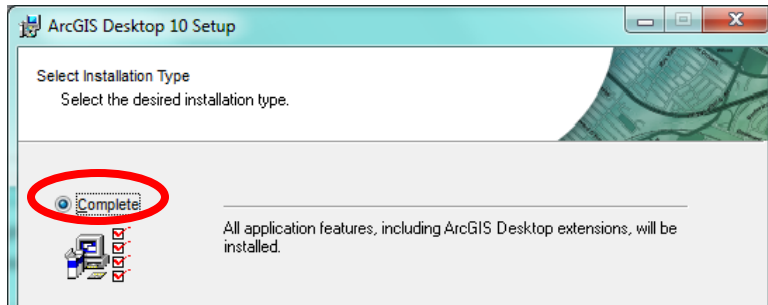
Close any currently running programs (it is okay to keep this pdf open, though).

Click **Next** on the Welcome panel.

Click the button to accept the license agreement and click **Next** again.

Click Setup to select the product as shown above.

Select the **Complete** option and click **Next**.



Keep the default installation location for ArcGIS. Click **Next**.

Keep the default installation location for Python. Click **Next**.

Click **Next** to start installing. Wait for it to finish. It can take 15-20 minutes or more, so be patient and find something else to do (not on your computer).

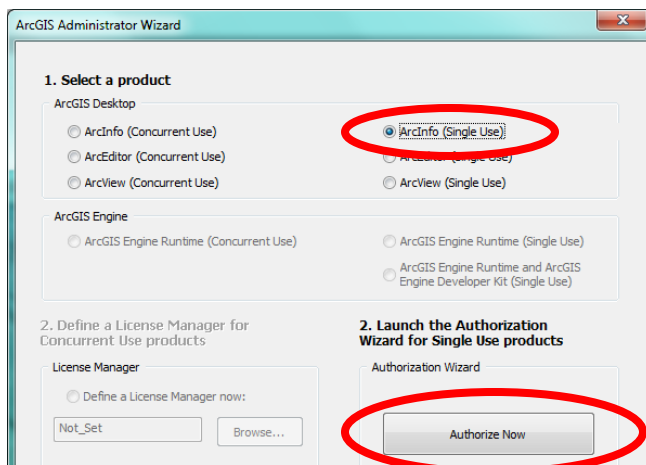
When it finishes you will see this screen. Click **Finish**.



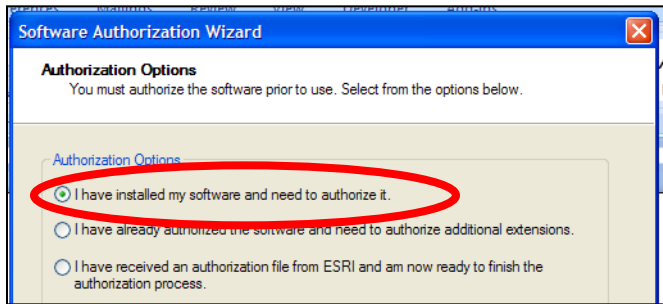
## Step 2. Registering the installed software

The Registration window below should automatically appear. If it does not, go to **Start > All Programs** and open the **ArcGIS** folder. Select the **ArcGIS Administrator** program. Click on the Desktop entry in the left panel, if necessary, to show the Registration window below.

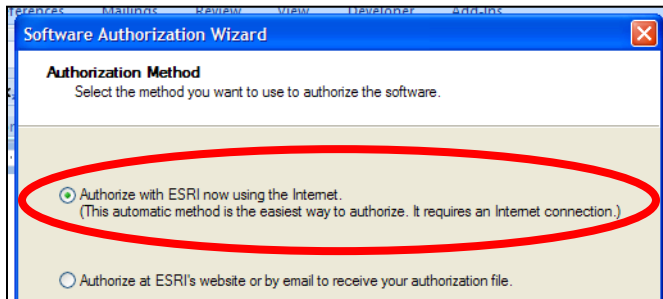
Select the **ArcInfo (Single Use)** option and click **Authorize Now**.



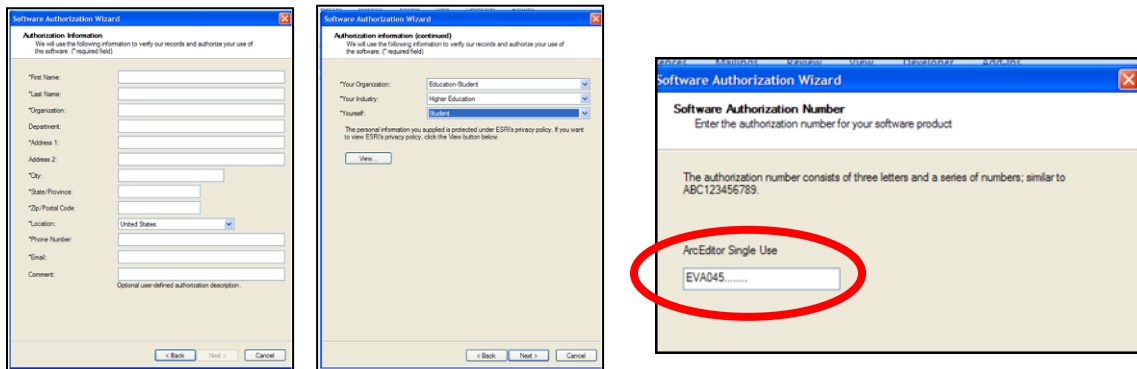
On the Authorization Options panel, choose **I have installed my software and need to authorize it**. Click **Next**.



For the Authorization Method, choose **Authorize with ESRI now using the Internet**. Click **Next**.

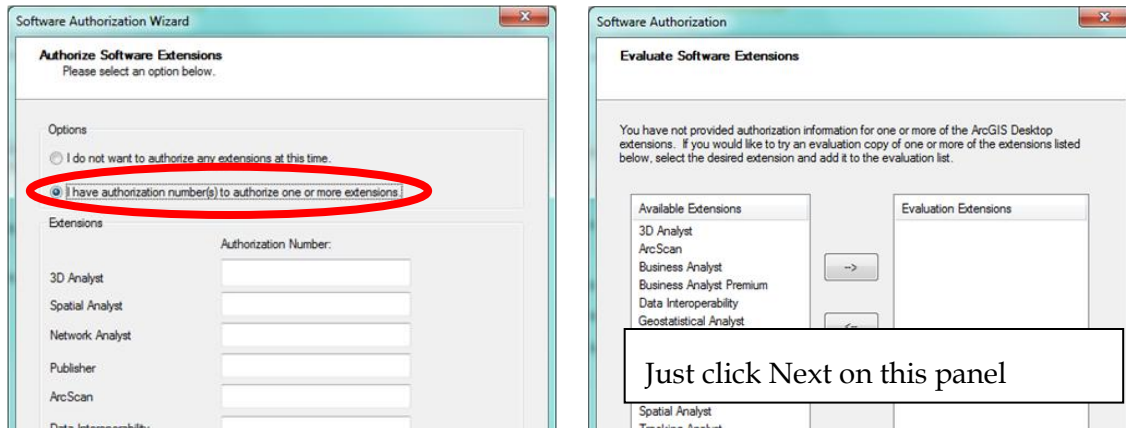


Enter the Authorization Information if needed (two panels) and click **Next** after each one.

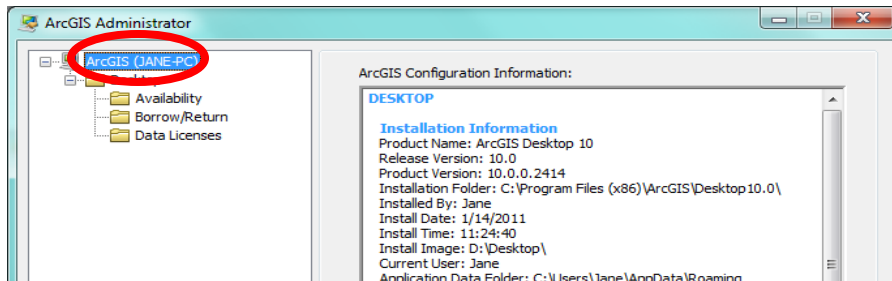


Enter the Software Authorization Number from your DVD packet (or from the number the instructor gave you if you are using the ISO method). It must be the same number that you activated on the ESRI web site. Click **Next**.

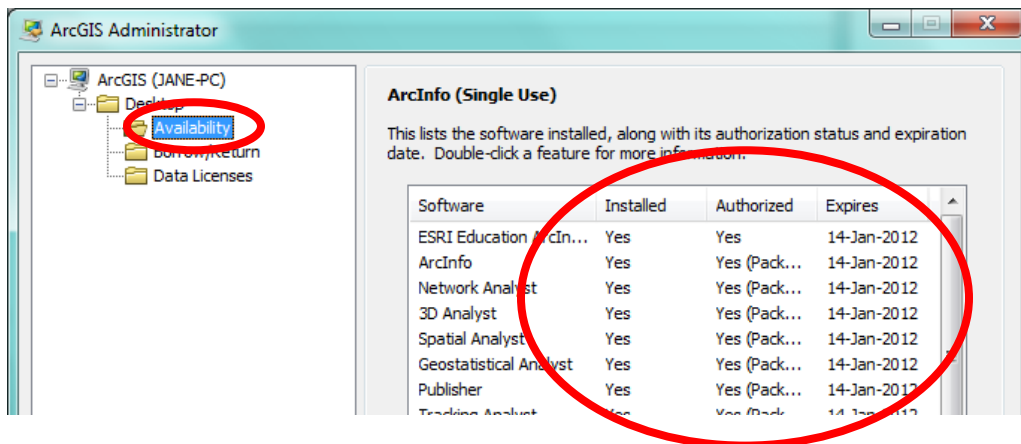
Fill the button to authorize additional extensions, but leave the boxes blank. Click **Next**. Do not request any evaluation extensions and click **Next** again.



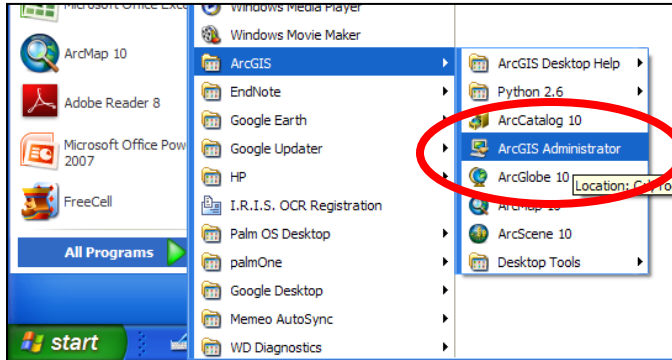
The authorization process will begin and will take a minute or two. When it is finished you will see the screen below. Notice that the top level entry in the tree on the left panel is highlighted.



You can check the authorization success by clicking on the **Availability** text in the left panel. You will see the screen below. The basic product ArcInfo and the extensions should all have Yes in both of the Installed and Authorized columns and will show the expiration date as one year from the current date. You are finished authorizing the software. Click **OK** to close.

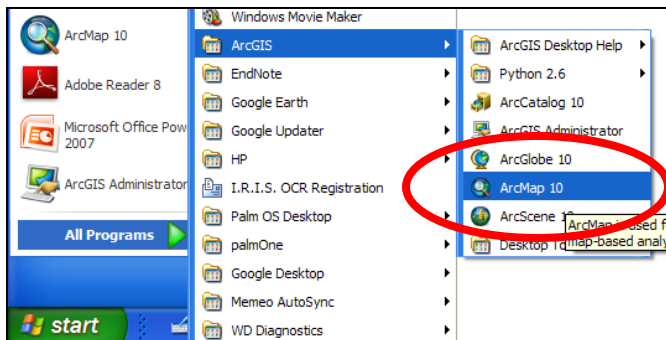


You can return to this Administrator program at any time to check your licenses by choosing ArcGIS > ArcGIS Administrator from your computer's Start menu.



### Step 3. Test the software

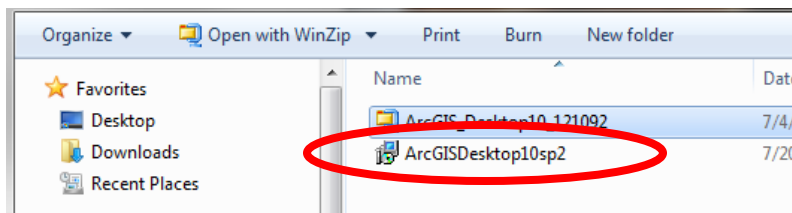
Go to **Start** on your computer, click All Programs, and look for the **ArcGIS** folder. Click on **ArcMap 10** to open it. Wait, as it will take a minute or two to start the first time. You can start using it now, or close it and go on with installing the Service Pack.



### Step 4. Installing Service Pack 2

You will need access to the campus F: drive. If your computer doesn't have it, login to a campus computer with your Mines account and copy the data to a thumb drive. If you don't have a Mines account, you will need to copy the service pack from the instructor or a student.

Open Windows Explorer and navigate to the **F:\Dept\gisdata\ArcGIS10** folder. Copy the **ArcGISDesktop10sp2.msp** file and paste it to your computer or a portable/thumb drive.



Close all running programs. Double-click the **ArcGISDesktop10sp2.msp** file to launch the installer. Follow all the directions.